

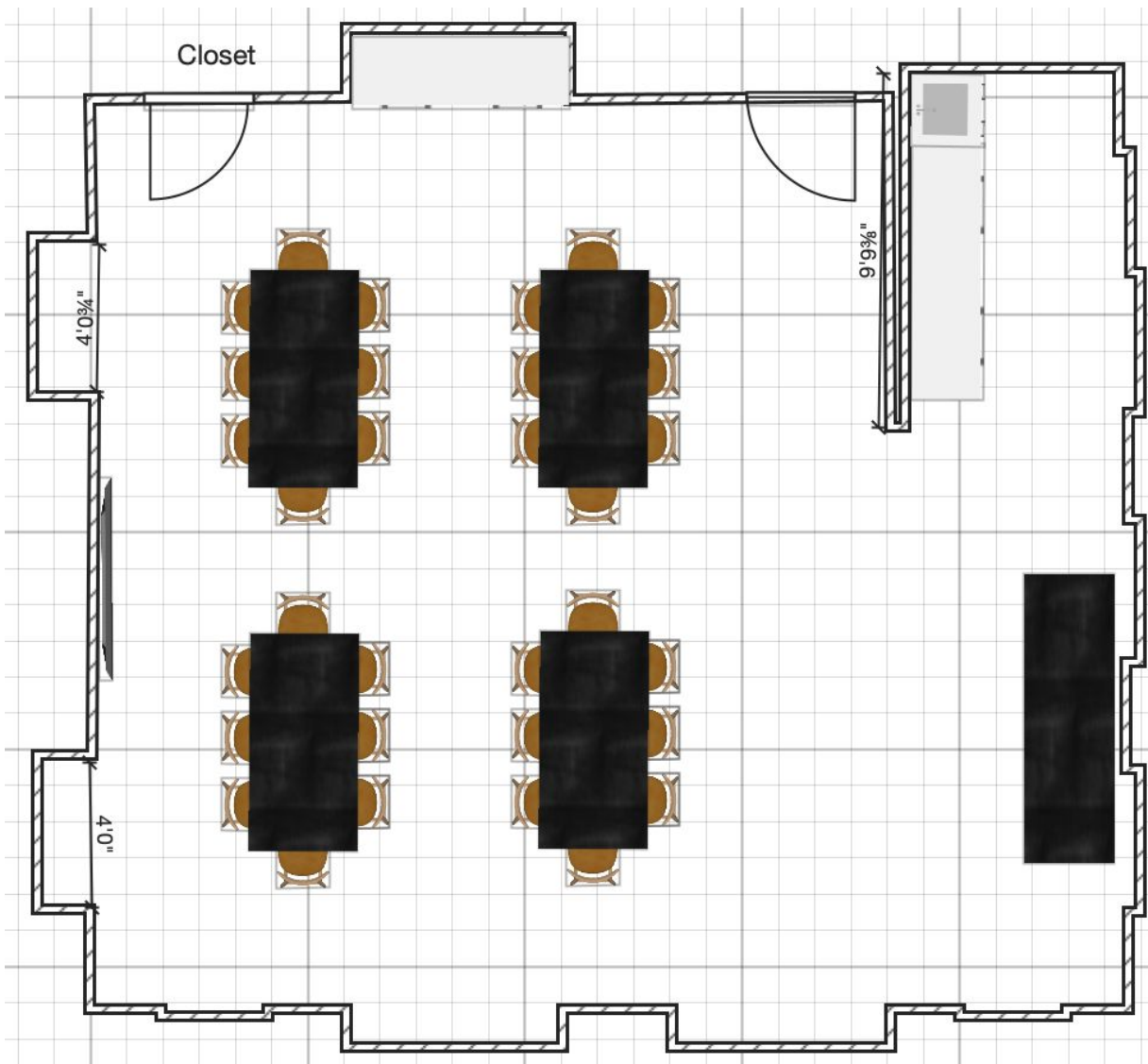
Floor 1

This is Currently the 1st floor conference room.

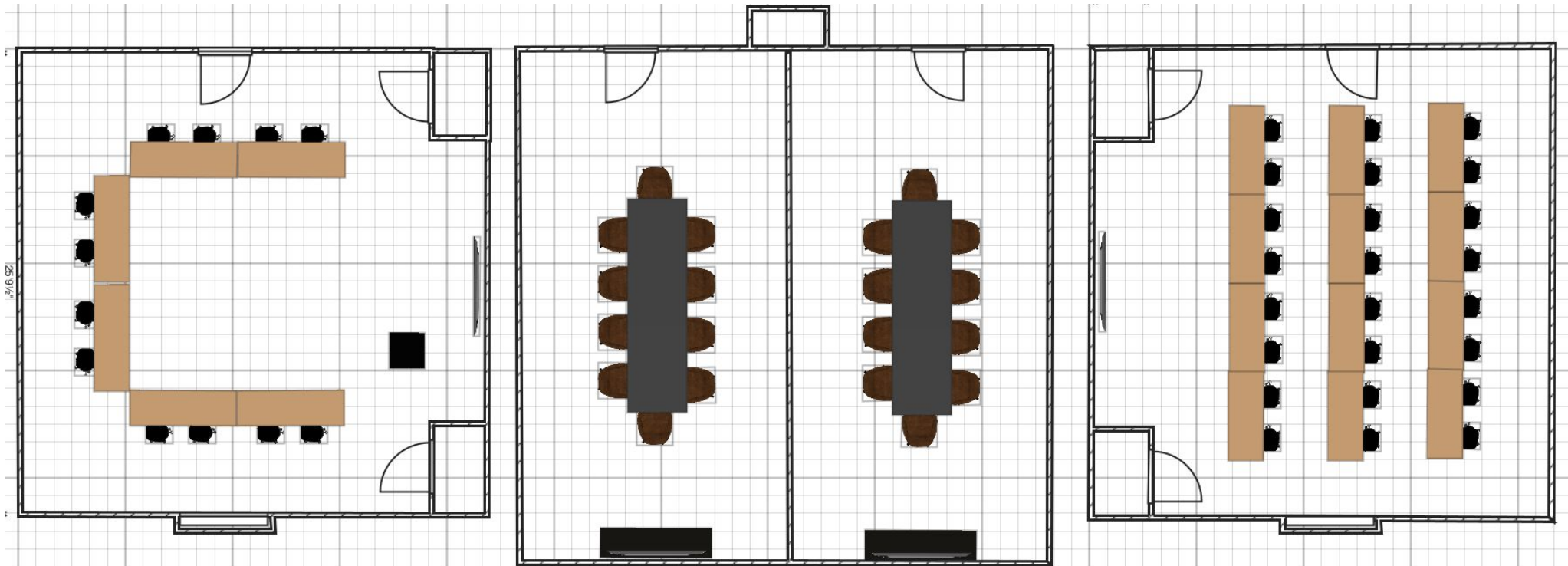
Dining Room Experience

- 4 - 72" x 36" Rectangular Tables
- 8 - Standard Size Dining Chair
- 1 - 96" x 30" Serving Table

The cabinets are already in the room and will stay in the room.



Floor 2 - Rooms 2001-2004

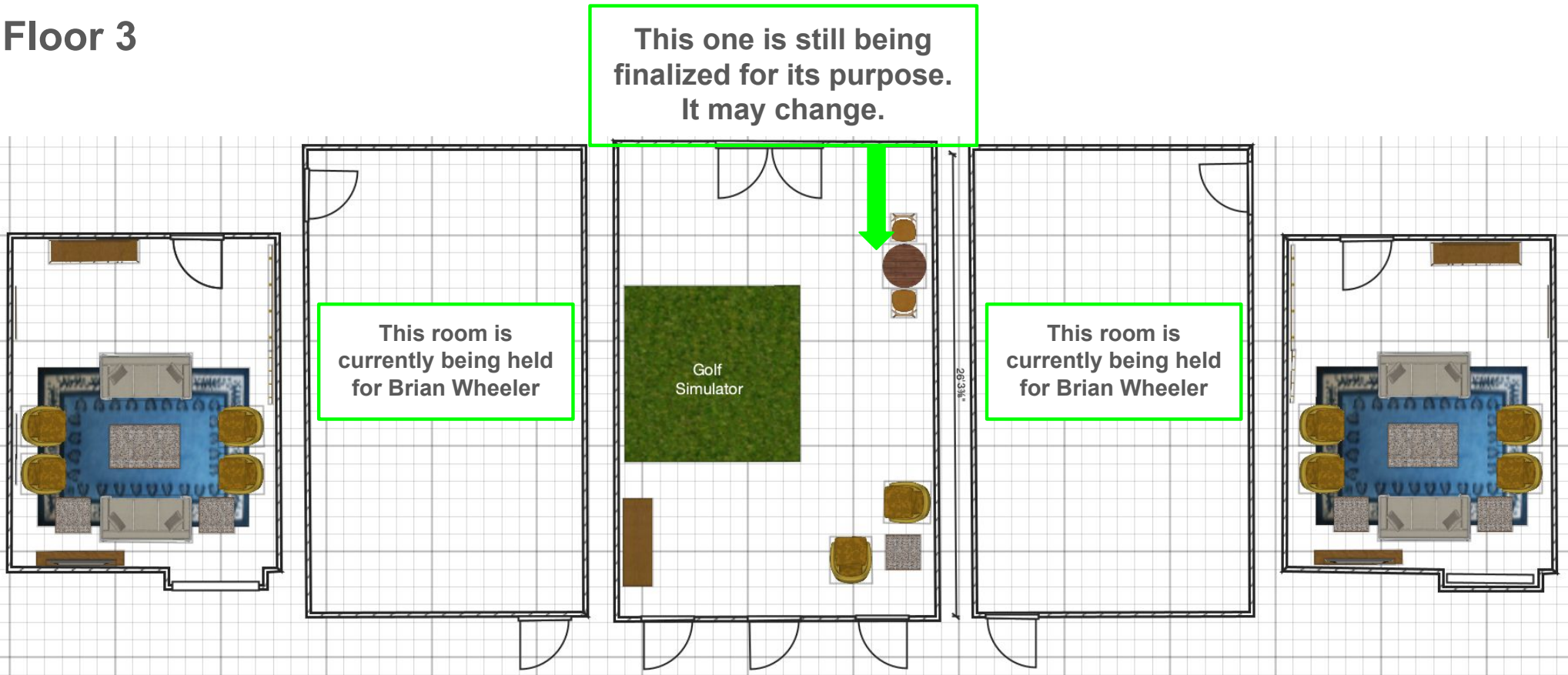


Training Room
These tables are 72" x 24".
12 people in Rolling Training Chairs

2 Conference Rooms with TVs
Each has a 12' Conf. Table with 10
Chairs

Training Room
12 - 60"x 24" Rolling Training Tables
24 - Rolling Training Chairs

Floor 3



- Huddle / Green Room
- 2 - 63" x 32" Sofas
- 4 - Small Accent Chairs
- 1 - Console Table 60" x 16"
- 1- TV on Wall with small Table Underneath by Window
- 1 - Large Wall Mirror by Console

- Golf Simulator Game Room
- 10' x 10' Golf Simulator
- 2 - Accent Chairs with Small Table
- 1 - Console Table 60" x 16"
- 1 - 36" Round Table with 2 Cafe Chairs

Floor 4

Event Space - Rentable Room with 128 Seats at 60" Round Tables

2 - Wall TVs

